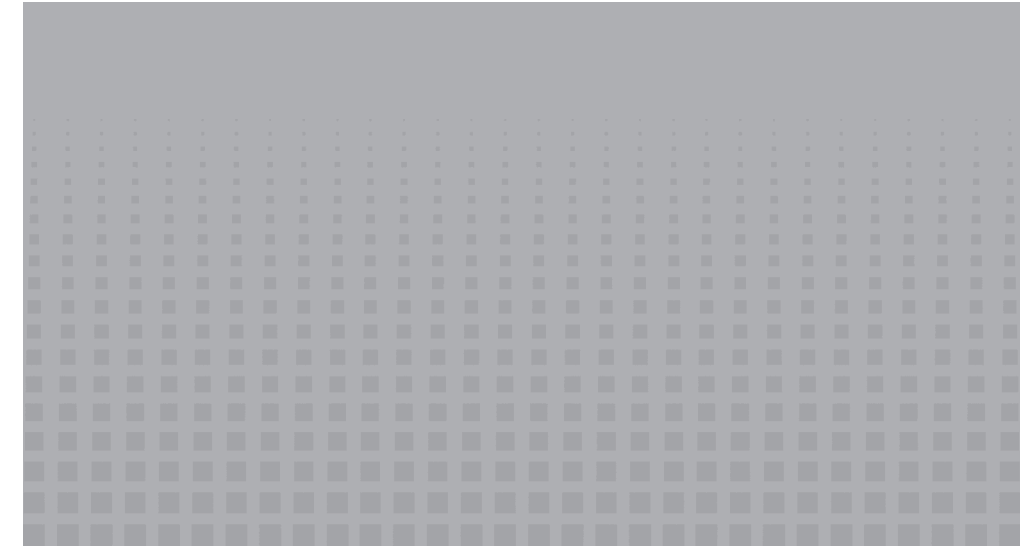





SAMUEL 1855
PRESSURE VESSEL GROUP

**YOUR SUCCESS
IS OUR BUSINESS**

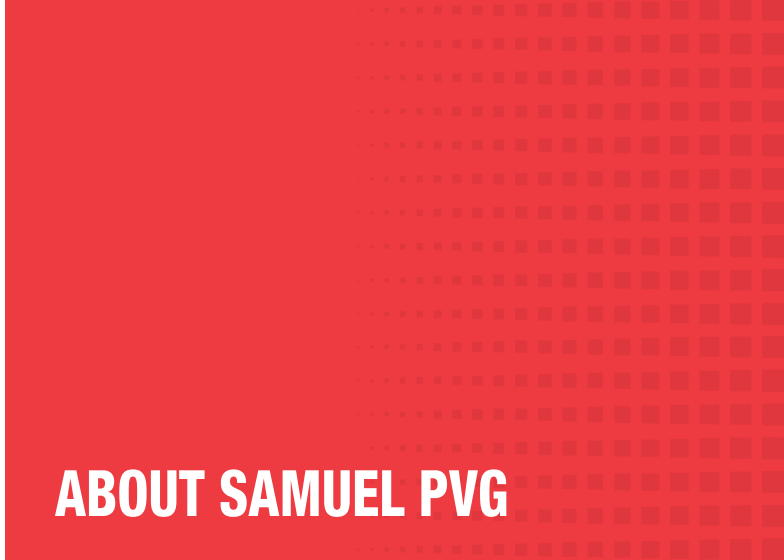


400+
**ASME
CERTIFIED
WELDERS**
CODES &
STANDARDS

192"
DIAMETER
PRESSURE VESSELS
4
MANUFACTURING
& DISTRIBUTION
LOCATIONS

4"
OF
UP TO 300
PSI
STANDARD
DESIGNS

99%
ON-TIME
DELIVERY
48
DESIGNS IN
INVENTORY
READY TO SHIP



ABOUT SAMUEL PVG

Samuel Pressure Vessel Group (Samuel PVG), part of the family of Samuel companies, is a global leader in the design, manufacturing and distribution of pressure vessels. We manufacture and ship more than 100,000 pressure vessels for compressed air every year! As an industry leader and global supplier to the air compression industry, we pride ourselves on serving our customers. We have what you want, when you want it!

With our on-time delivery score of 99.9%, you're sure to get your vessels when you need them – choose from more than 48 standard air receiver designs in inventory and ready to ship. Non-Stock Standard designs are part of our "Quick-Ship" program and have a 4 week lead-time. If one of those two options don't work for you, you can order a custom, made-to-order, design. These designs, depending on complexity, usually ship within 5–7 weeks.



SMALL VERTICAL TANKS

Part Number	Gallons	Size	Pressure	Supports & Attachments	Lead-Time
A10040	30	16 X 38	200	4 feet	In Stock
A10040-300	30	16 X 38	300	4 feet	4 Weeks
A10041	30	16 X 38	200	4 feet, 9" X 23" top plate	In Stock
A10043	60	20 X 48	200	4 feet	In Stock
A10043-300	60	20 X 48	300	4 feet	4 Weeks
A10044	60	20 X 48	200	4 feet, 13" X 30" top plate	In Stock
A10045	80	24 X 45	200	4 feet	In Stock
A10046	80	24 X 45	200	4 feet, 13" X 30" top plate	In Stock



VERTICAL TANKS



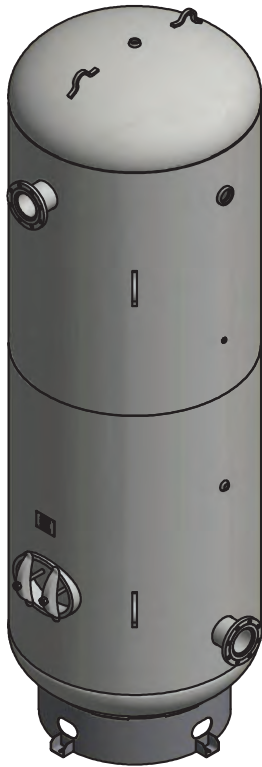
A10053

Part Number	Gallons	Size	Pressure	Supports & Attachments	Lead-Time
A10325	80	20 X 63	200	6" base ring	In Stock
A10325-300	80	20 X 63	300	6" base ring	4 Weeks
A10047	120	30 X 45	200	6" base ring, 15" X 39" top plate	In Stock
A10049	120	24 X 67	200	8" base ring	In Stock
A10049-300	120	24 X 67	300	8" base ring	4 Weeks
A12276	120	30 X 45	200	6" base ring	4 Weeks
A10051	200	30 X 72	200	8" base ring	In Stock
A10051-300	200	30 X 72	300	8" base ring	4 Weeks
A10053	240	30 X 84	200	8" base ring	In Stock
A10053-300	240	30 X 84	300	8" base ring	4 Weeks
A10055	400	36 X 93	165	8" base ring	In Stock
A10055-300	400	36 X 93	300	8" base ring	4 Weeks
A10056X	400	36 X 93	200	8" base ring	In Stock
A10129	500	36 X 117	165	8" base ring	In Stock
A10129-300	500	36 X 117	300	8" base ring	4 Weeks
A10130	500	36 X 117	200	8" base ring	In Stock

VARIETY OF FINISH OPTIONS

- **Exterior Coatings:** The following optional coatings can be added to any vessel.
- **Exterior Powder** (standard colors include: Gray, White, Black, and Blue (other colors available upon request))
- **Exterior Epoxy** (Epoxy with semi-gloss polyurethane finish. Standard colors include: gray, white, black, and blue, with other colors available upon request)
- **Interior Powder**
- **Interior Epoxy**
- **NSF & FDA Interior Coatings**





C100898-X

LARGE VERTICAL TANKS

Part Number	Gallons	Size	Pressure	Supports & Attachments	Lead-Time
A10131	660	42 X 120	150	8" base ring	In Stock
A10131-300X	660	42 X 120	300	8" base ring	4 Weeks
C100950-X	660	42 X 120	200	8" base ring	In Stock
A10132	1060	48 X 144	155	8" base ring	In Stock
A10132-300	1060	48 X 144	300	8" base ring	4 Weeks
C100331	1060	48 X 144	200	8" base ring	In Stock
A10332	1550	54 X 166	200	8" base ring	4 Weeks
C100898-X	1550	54 X 166	165	8" base ring	In Stock
A10333	2000	60 X 174	150	8" base ring	In Stock
A10336	2560	60 X 220	150	8" base ring	In Stock
A10339	3000	66 X 214	137	8" base ring	In Stock
C102476	3000	66 X 214	150	8" base ring	In Stock
A10340	3800	72 X 228	150	8" base ring	In Stock
C103115	5000	72 X 305	150	8" base ring	In Stock

CAN'T FIND WHAT YOU'RE LOOKING FOR?

No problem! We can build a custom vessel to meet your specific needs. We have a wide range of expertise with engineered-to-order vessel designs. We've manufactured anything from custom air receivers to hyperbaric chambers. The possibilities are endless: 4" to 192" Diameter, full vacuum to 3,000PSI, and materials of construction including: carbon steel, stainless steel, and high alloys. Below is a sampling of what we've done:

- Air Receivers
- DOT Shipping Containers
- Separators
- Accumulators
- Heater Treaters
- Knock-Out Drums / Flare Drums
- Pulsation Bottles
- Scrubbers
- Dryers
- Filter Housings
- Fluid Storage Tanks
- Air Brake Tanks
- B31.3 Process Piping
- Absorbers
- Blowdown Tanks
- Buffer Tanks
- Storage Tanks
- Vapor Recovery Tanks
- Coalescers
- Slug Catchers
- Oil Field Tanks
- Hyperbaric Chambers



Simply contact us with the following information and we can get started on designing a custom solution for you:

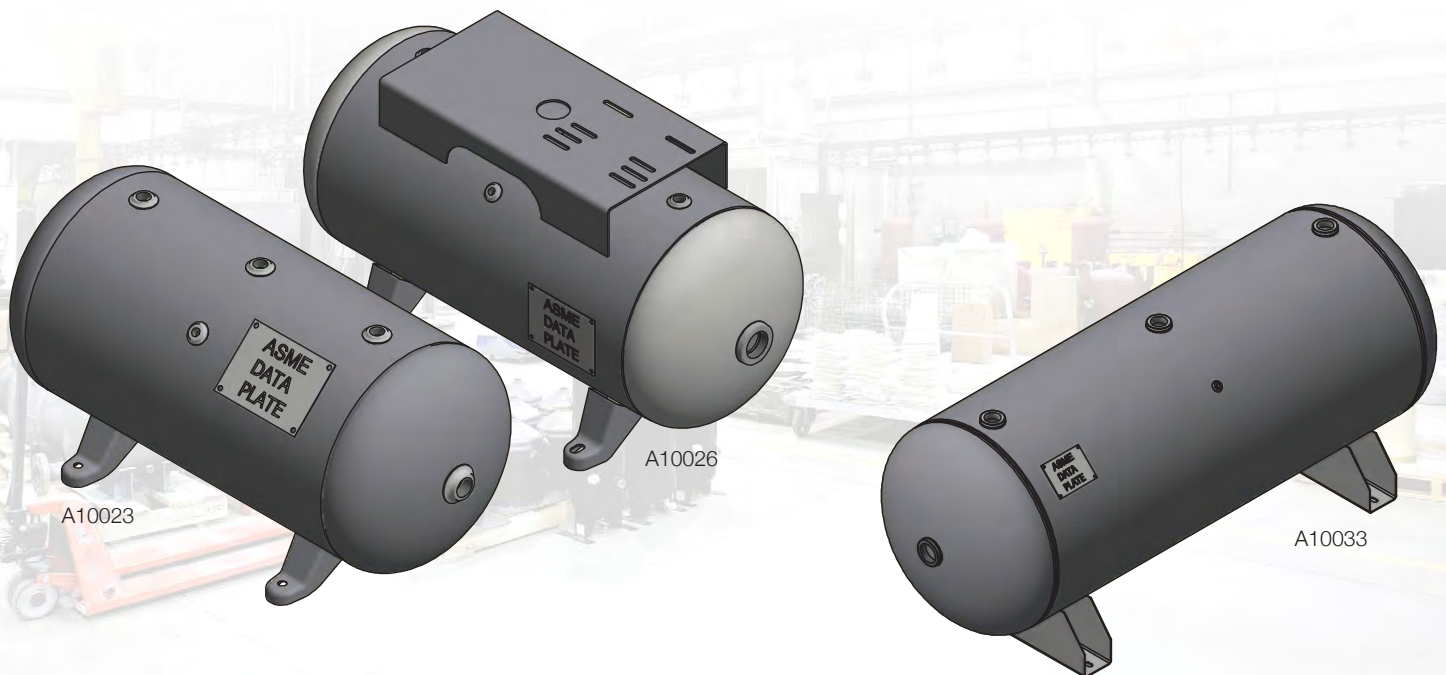
- Size / Overall Dimensions (we'll choose the best option if you're not limited by a specific footprint or size restrictions)
- Orientation (vertical or horizontal)
- Internal Pressure Rating (MAWP)
- Temperature rating
- Volume
- Material Requirement
- Certificates other than ASME
- Interior and Exterior Finish
- Quantity

SMALL HORIZONTAL TANKS WITH FEET

Part Number	Gallons	Size	Pressure	Supports & Attachments	Lead-Time
A10023	12	12 X 27	200	Feet	In Stock
A10023-300	12	12 X 27	300	Feet	4 Weeks
A10024	12	12 X 27	200	Feet, 9" X 15" top plate	In Stock
A10025	20	14 X 33	200	Feet	In Stock
A10025-300	20	14 X 33	300	Feet	4 Weeks
A10026	20	14 X 33	200	Feet, 10" X 19" top plate	In Stock
A10039	30	16 X 38	200	Feet, 16" X 38" top plate	In Stock

SMALL HORIZONTAL TANKS WITH SADDLE LEGS

Part Number	Gallons	Size	Pressure	Supports & Attachments	Lead-Time
A10027	30	16 X 38	200	Saddle legs	In Stock
A10027-300	30	16 X 38	300	Saddle legs	4 Weeks
A10028	30	16 X 38	200	Saddle legs, 12" X 24" top plate	In Stock
A10136	30	16 X 38	200	Saddle legs, 12" X 40" extended top plate	4 Weeks
A10029	60	20 X 48	200	Saddle legs	In Stock
A10029-300	60	20 X 48	300	Saddle legs	4 Weeks
A10030	60	20 X 48	200	Saddle legs, 14" X 30" top plate	In Stock
A10137	60	20 X 48	200	Saddle legs, 16" X 50" extended top plate	4 Weeks
A10031	80	20 X 63	200	Saddle legs	In Stock
A10031-300	80	20 X 63	300	Saddle legs	4 Weeks
A10032	80	20 X 63	200	Saddle legs, 12" X 34" top plate	In Stock
A10138	80	20 X 63	200	Saddle legs, 16" X 66" extended top plate	4 Weeks
A10033	120	24 X 67	200	Saddle legs	In Stock
A10034	120	24 X 67	200	Saddle legs, 18" X 44" top plate	In Stock
A10139	120	24 X 67	200	Saddle legs, 16" X 74" extended top plate	4 Weeks

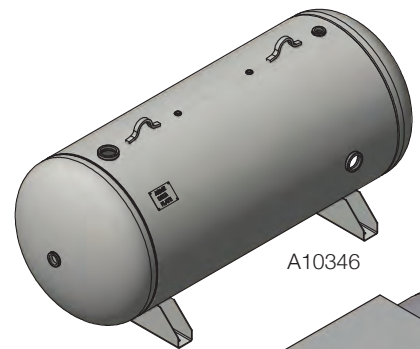


MEDIUM HORIZONTAL TANKS

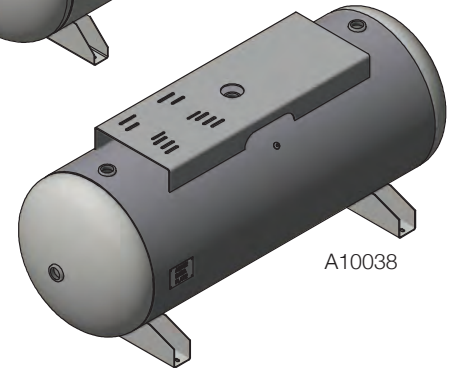
Part Number	Gallons	Size	Pressure	Supports & Attachments	Lead-Time
A10035	200	30 X 72	200	Saddle legs	In Stock
A10036	200	30 X 72	200	Saddle legs, 18" X 44" top plate	In Stock
A10140	200	30 X 72	200	Saddle legs, 18" X 86" top plate	4 Weeks
A10037	240	30 X 84	200	Saddle legs	In Stock
A10038	240	30 X 84	200	Saddle legs, 18" X 48" top plate	In Stock
A10141	240	30 X 84	200	Saddle legs, 18" X 96" extended top plate	4 Weeks
A10346	400	36 X 93	165	Saddle legs	In Stock
A10348	400	36 X 93	200	Saddle legs	4 Weeks
A10352	500	36 X 117	165	Saddle legs	In Stock
A10354	500	36 X 117	200	Saddle legs	4 Weeks

ACCESSORIZE ANY VESSEL

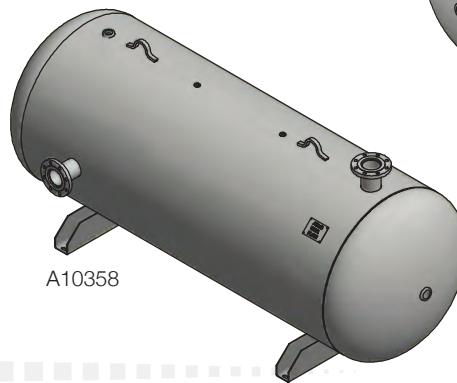
- Safety Relief Device
- Pressure Gauge
- Drain
- Kit: Includes Safety Relief Device and Pressure Gauge



A10346



A10038



A10358

LARGE HORIZONTAL TANKS

Part Number	Gallons	Size	Pressure	Supports & Attachments	Lead-Time
A10358	660	42 X 120	150	Saddle legs	In Stock
C103084	660	42 X 120	200	Saddle legs	4 Weeks
A10368	1060	48 X 144	155	Saddle legs	In Stock
A10368-200	1060	48 X 144	200	Saddle legs	4 Weeks
C102285	1550	54 X 166	165	Saddle legs	4 Weeks
A10665	2000	60 X 174	150	Saddle legs	4 Weeks
A10392	2560	60 X 220	150	Saddle legs	In Stock

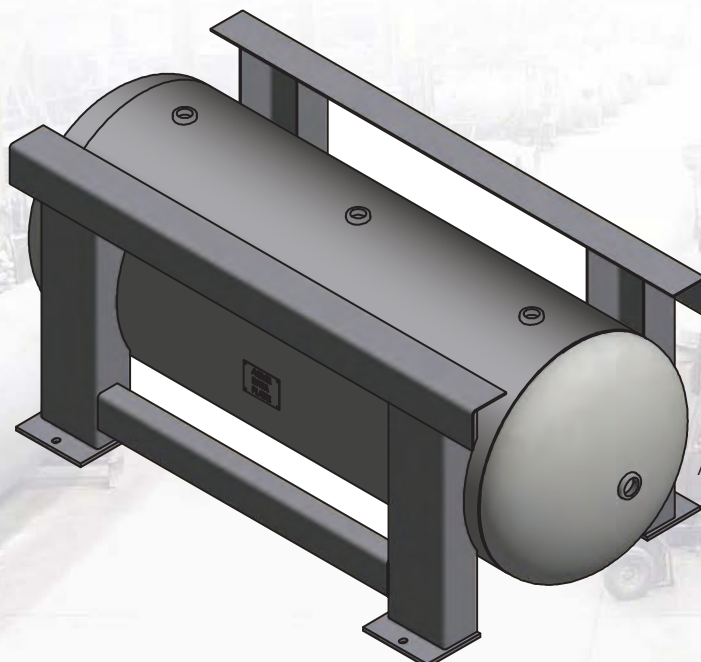
QUALITY & DESIGN CODES / STANDARDS

We are an ISO 9001 certified manufacturer, committed to the highest quality standards. We offer specialized testing, on-site inspection coordination and detailed documentation to ensure quality product each and every time. Although ASME Code is the most common code we build to, we have extensive experience working with the following codes and standards as well:

- ASME Section VIII Div 1 (U Stamp)
- ASME Section VIII Div 2 (U2 Stamp)
- ABS
- Algerian
- AS1210
- CRN
- CE/PED
- DOSH
- DNV
- GOST/TRCU
- Hazardous Material Regulations (DOT)
- Lloyds
- MHWL
- MOM
- NR13
- SELO
- USCG

GRASSHOPPER TANKS

Part Number	Gallons	Size	Pressure	Supports & Attachments	Lead-Time
A10123	30	16 X 38	200	Grasshopper / Pedestal	4 Weeks
A10124	60	20 X 48	200	Grasshopper / Pedestal	4 Weeks
A10125	80	20 X 63	200	Grasshopper / Pedestal	4 Weeks
A10126	120	24 X 67	200	Grasshopper / Pedestal	4 Weeks
A10127	200	30 X 72	200	Grasshopper / Pedestal	4 Weeks
A10128	240	200	Grasshopper / Pedestal	4 Weeks	



A10128



YOUR STRATEGIC SUPPLIER

Our team is dedicated to delivering top-quality pressure vessels and works collaboratively to develop innovative solutions that meet real business needs. We bring in-house technical and product expertise to each customer relationship, offering design capabilities, specialized products and patents, inventory management programs and best-in-class safety and quality systems. Our long-standing history, breadth of experience and proven delivery record ensures that you get your products to market on-time and for less.

LOCATIONS

Samuel Pressure Vessel Group has multiple manufacturing and sales facilities. These geographic locations and diverse capabilities allow us to better serve you. We succeed when you succeed.

2121 Cleveland Ave.
Marinette, Wisconsin 54143
t: (800) 247-8265
(715) 735-9311

1119A Bridge Street
Tomahawk, Wisconsin 54487
t: (800) 247-8265
(715) 453-5326

58 Samuel Way
Lebanon, Virginia 24266
t: (800) 247-8265
(276) 415-9970

2140 Winston Park Dr., Unit 19
Oakville, Ontario L6H 5V5
Canada
t: (905) 847-2770

ABOUT SAMUEL Founded in 1855, Samuel, Son & Co. is a family-owned and operated integrated network of metal manufacturing, processing and distribution division.

With over 4800 employees and 100+ facilities, Samuel provides seamless access to metals, industrial products and related value-added services. Supporting over 40,000 customers, we leverage our industry expertise, breadth of experience and the passion of our people to help drive success for North American Business – one customer at a time.

www.samuelpvg.com • spvg@samuel.com

YOUR SUCCESS IS OUR BUSINESS

